



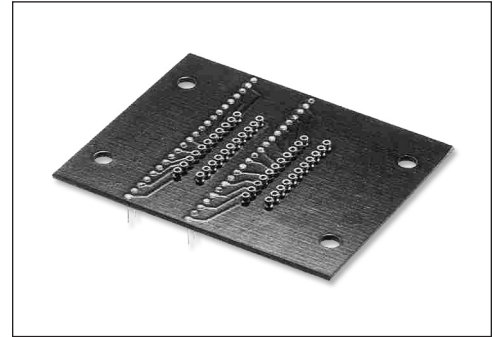
Series 647 Universal SOIC-to-0.600 [15.24] DIP Adaptor

FEATURES

- 44-pin adaptor for mounting Aries' Series 547 Universal SOIC ZIF (zero-insertion-force) Test Socket to 0.600 [15.24] DIP PCB layout.
- Consult Data Sheet 10015 for test socket information.

SPECIFICATIONS

- Body Material: black FR-406 or IS410 per IPCA4101A/26, 0.094 [2.39] thick, with 1-oz. min. Copper traces
- Female Pin Body: Brass Alloy 360 1/2-hard per UNS C36000 ASTM-B16-00
- Female Pin Body Plating: 200µ [5.08µ] min. Tin per ASTM B545 Type 1 over 100µ [2.54µ] min. Nickel per SAE-AMS-QQ-N-290
- 4-fingered Collet Contact: Beryllium-Copper per UNS C17200 ASTM-B194-01
- Collet Contact Plating: 10µ [0.25µ] min. Gold per MIL-G-45204 over 50µ [1.27µ] min. Nickel per SAE-AMS-QQ-N-290
- Male Pin: Phosphor Bronze 544 UNS C5400 ASTM-B139-90
- Male Pin Plating: 200µ [5.08µ] min. Tin per ASTM B545 Type 1 over 100µ [2.54µ] min. Nickel per SAE-AMS-QQ-N-290
- Collet Contact Current Rating: 3 amps
- Operating Temperature: 221°F [105°C]
- Insertion Force: 180 grams/pin; Withdrawal Force: 90 grams/pin; Normal Force: 140 grams/pin; based on a 0.018 [0.46] diameter test lead



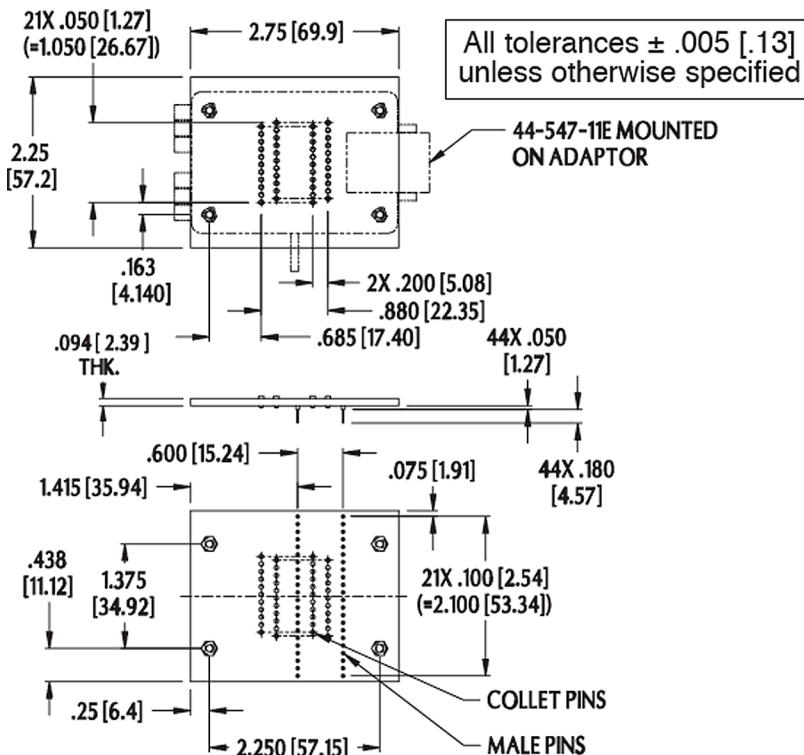
NOTE: Aries specializes in custom design and production. In addition to the standard products shown on this page, special materials, platings, sizes, and configurations can be furnished, depending on quantities. Aries reserves the right to change product specifications without notice.

MOUNTING CONSIDERATIONS

- Suggested PCB Hole Size: 0.028 ±0.002 [0.71 ±0.05] diameter

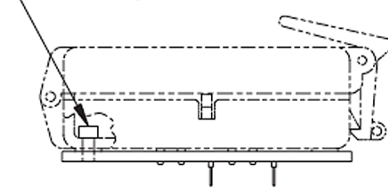
See Data Sheet **10015** for ordering information.

ALL DIMENSIONS: INCHES [MILLIMETERS]

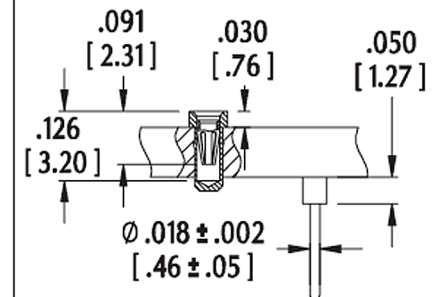


MOUNTING CONSIDERATIONS

4X SOCKET HD CAP SCR #4-40



CONTACT DETAIL



Bristol, PA 19007-6810 USA
 TEL (215) 781-9956 • FAX (215) 781-9845
 WWW.ARIESELEC.COM • INFO@ARIESELEC.COM

